

Human AFP Antibody, mAb, Mouse

Products information

Cat.No	Clone	Ig Subclass
A01788	1D9H5	IgG1, κ
A01789	2E1C10	IgG1, κ
A01790	3B6G7	IgG1, κ

Host: Mouse

Immunogen: AFP protein purified from human hepatocellular carcinoma.

Purification: Protein A affinity column

Conjugation: Unconjugated

Version: 03/22/2012

Description

AFP (Alpha-Feto Protein) is a glycoprotein with molecular weight of approximately 70 kDa. It is a major protein in developing fetus and decreases to lower level after birth. In healthy adults, less than 20 ng/ml of AFP is found in the serum. Serum AFP elevates when hepatocellular carcinoma or testicular germ cell tumors occurs. Therefore, it is a useful marker in diagnosing hepatocellular carcinoma and germ cell tumors. In addition, for pregnant women, the AFP concentration is 10-150 ng/ml in the blood. High levels of AFP can indicate a neural tube defect of the fetus, such as spina bifida.

GenScript Human AFP Antibody, mAb, Mouse is produced from the hybridoma resulting from fusion of SP2/0-Ag14 myeloma and B-lymphocytes obtained from mouse immunized with AFP protein purified from human hepatocellular carcinoma (Swiss-Prot: P02771).

Species Reactivity

AFP monoclonal antibodies (1D9H5, 2E1C10 and 3B6G7) recognize human AFP protein.

Sensitivity

The limit of detection for antibody pairs is less than 20 pg/ml.

Product Buffer

PBS, pH 7.4, containing 0.02% sodium azide.

Storage

GenScript Human AFP Antibody, mAb, Mouse should be stored at -20°C or below until use. Avoid repeated freezing and thawing cycles.

Applications

These antibodies are perfect choice for in vitro diagnostic assay development. They are prepared for non-clinical research use only. The recommended pairs are based on our laboratory results.

ELISA Capture: 1-10 µg/ml

ELISA Detection: 0.05-0.2 µg/ml

Recommended antibody pairing for sandwich immunoassay:

Detection \ Capture	A01788 (1D9H5)	A01789 (2E1C10)	A01790 (3B6G7)
A01788 (1D9H5)	-	-	+
A01789 (2E1C10)	+	-	-
A01790 (3B6G7)	-	-	-

** For non-clinical research use only. **

860 Centennial Ave., Piscataway, NJ 08854, USA

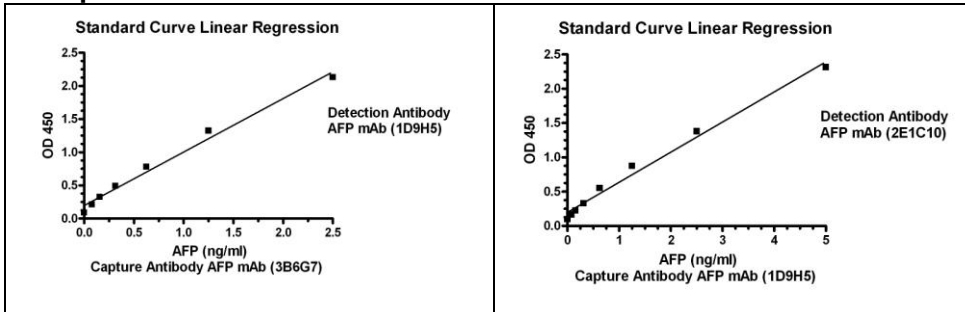
Toll-free Tel: 1-877-436-7274

Fax: 1-732-210-0262

Email: product@genscript.com

Web: www.genscript.com

Example



Antibody pairs analysis of AFP monoclonal antibodies by Sandwich ELISA:

General conditions:

1. Microplate was incubated with a capture antibody against AFP and blocked with PBS containing 1% BSA, followed by 3 washing cycles.
2. Incubation with AFP protein followed by 3 washing cycles.
3. Incubation with Biotin labeled detection antibody against AFP, followed by 3 washing cycles.
4. Incubation with Streptavidin-HRP, followed by 3 washing cycles.
5. Colorimetric determination of bound peroxidase activity.

** For non-clinical research use only. **